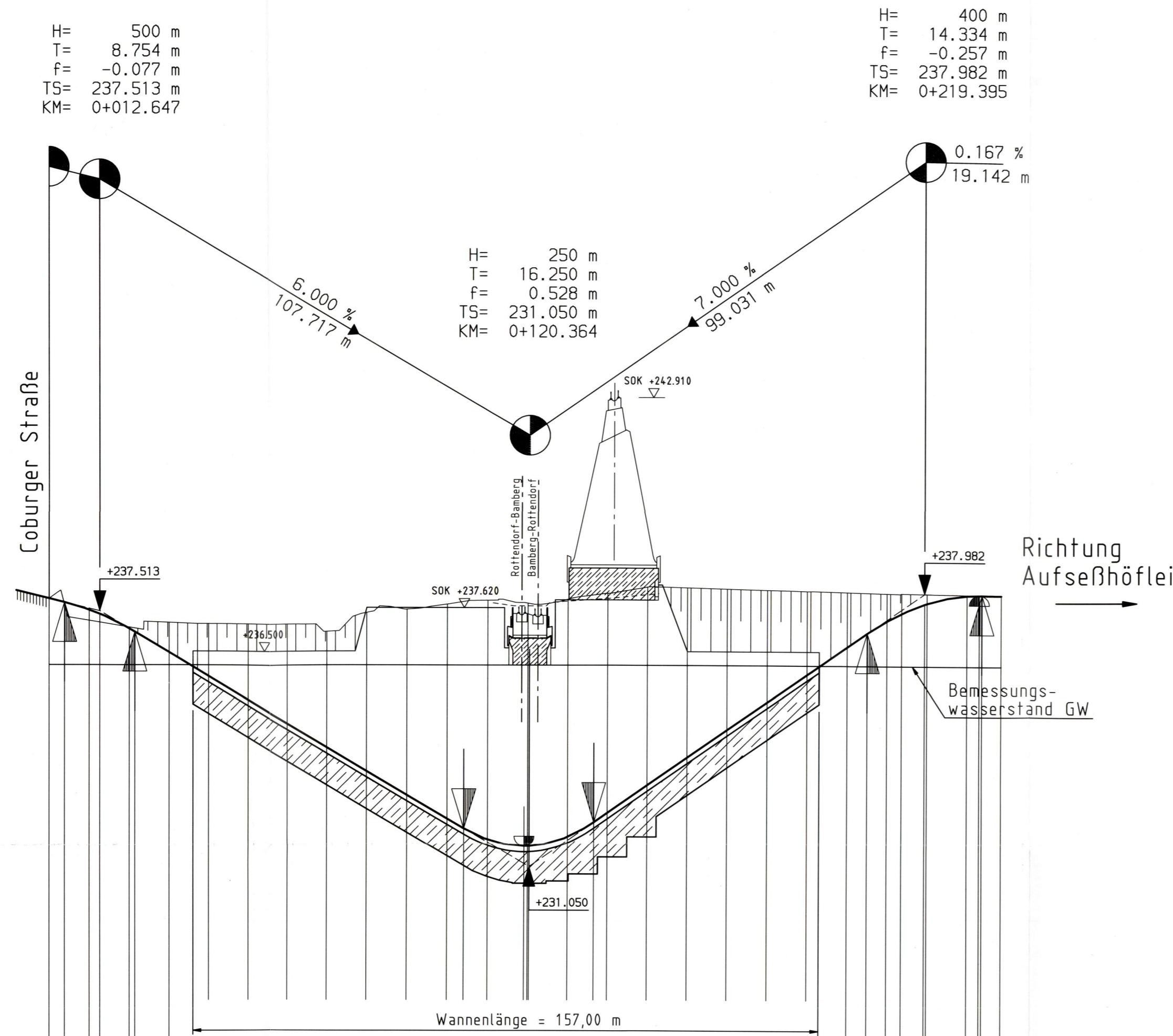
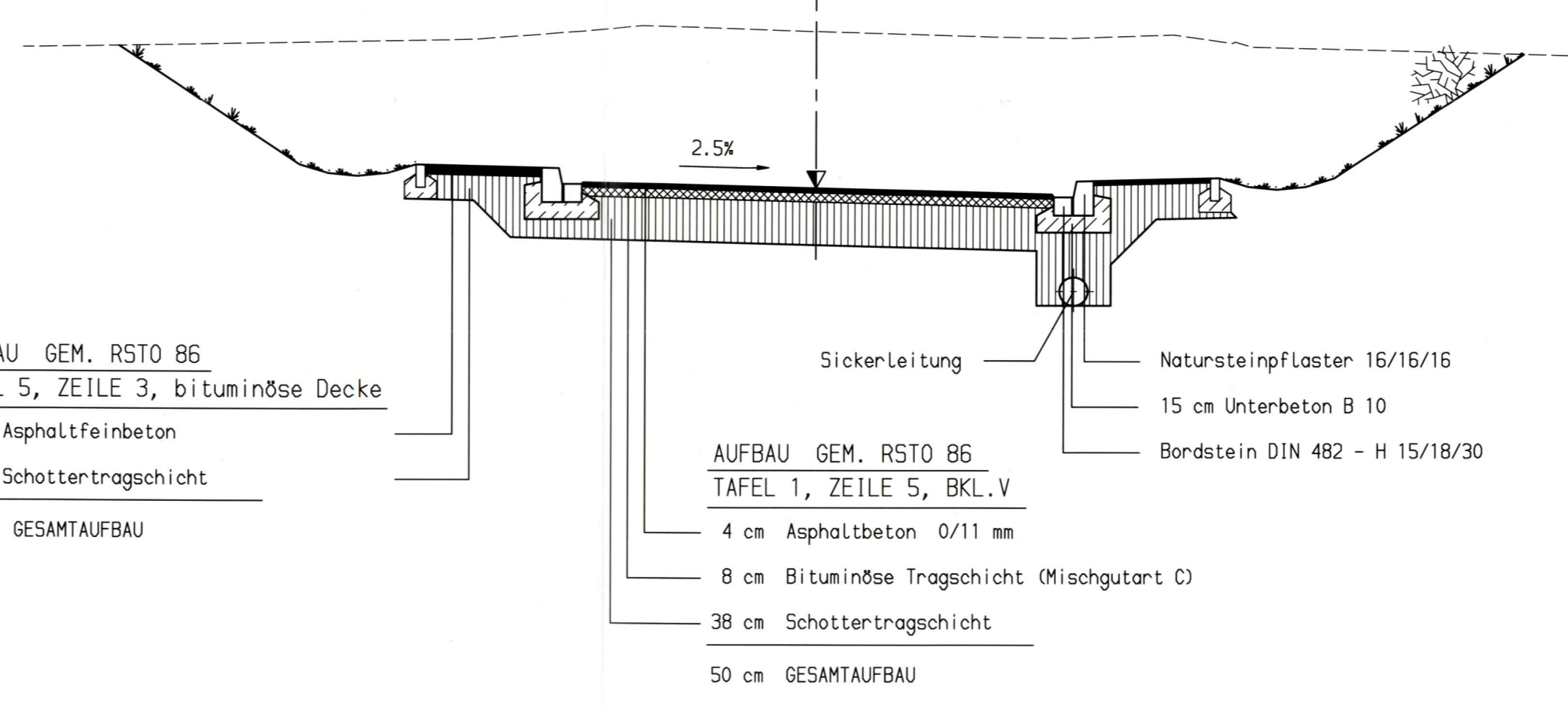
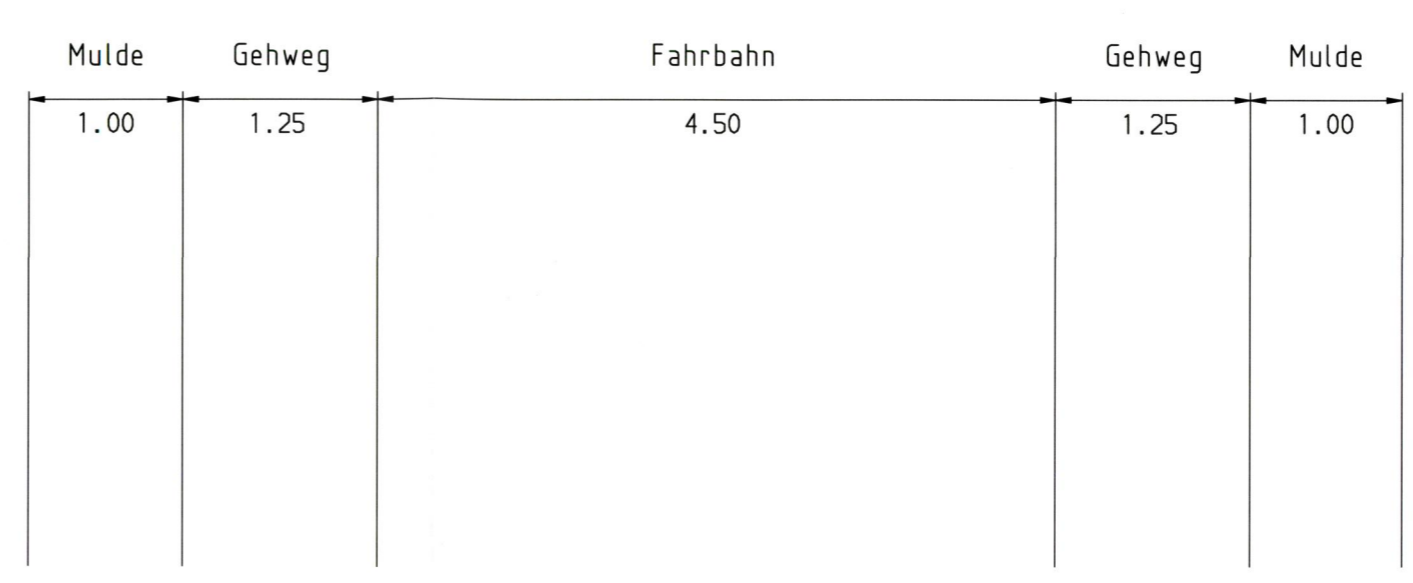


EBR Bau-km 1-719	
Unterführung Zufahrt zur Coburger Str.	
Bauwerksdaten:	
km Str. Bamberg-Rüttendorf	1-718.614
Bau-km	0+120.429
Kreuzungswinkel	100,0 90°
Lichte Weite	7,80 m
Stützweite	7,65 m
Lichte Höhe	4,50 m
Breite zw. d. Geländen	10,75 m

SBR Bau-km 1-740	
Unterführung Zufahrt zur Coburger Str.	
Bauwerksdaten:	
Bau-km Verbindungsgeis	1-738.572
Bau-km	0+141.161
Kreuzungswinkel	102,459 90°
Lichte Weite	7,80 m
Stützweite	7,65 m
Lichte Höhe	4,50 m
Breite zw. d. Geländen	19,03 m

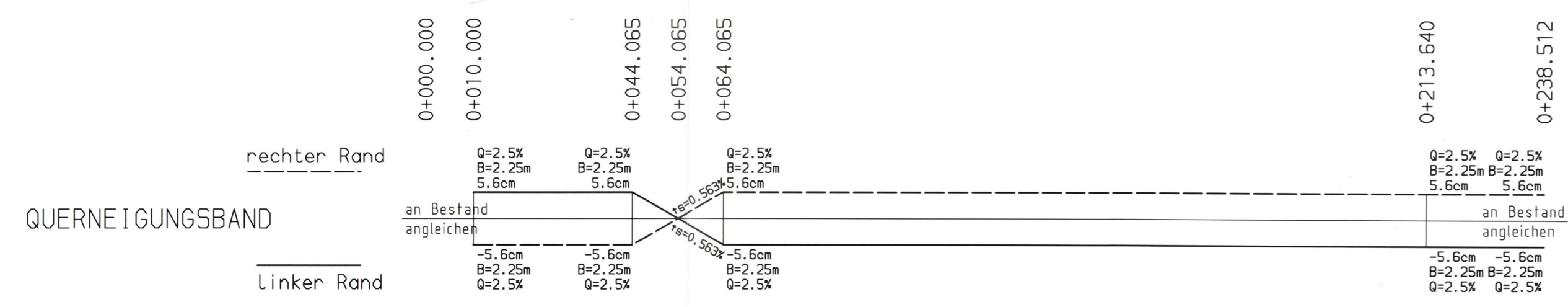
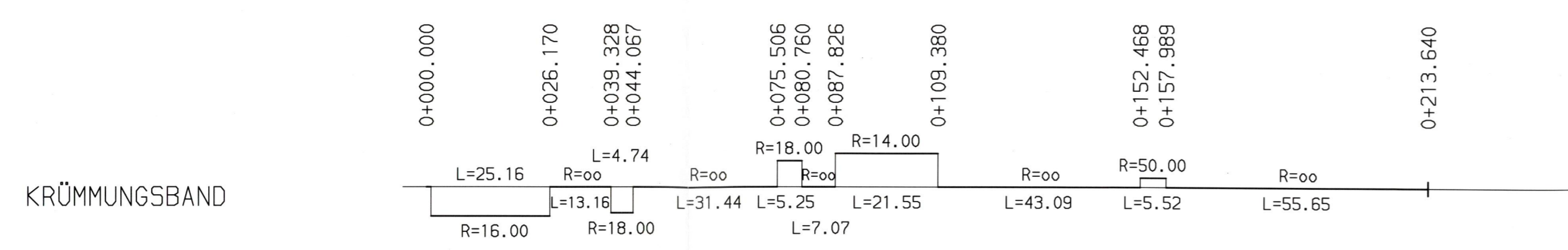


Regelquerschnitt Zufahrt zur Coburger Straße in Bamberg (außerhalb der GW-Wanne)



M = 1:1000/100
NN 225.00

Station	0+000	0+100	0+200
GRADIENTENHÖHE	0,000 237,825 3,893 237,732 10,000 237,542 15,447 237,536 20,000 237,070 21,431 236,988 30,000 237,224 30,000 236,472 40,000 237,197 50,000 235,972 60,000 237,188 60,000 234,072 70,000 237,000 80,000 234,475 80,000 233,072 90,000 237,362 90,000 232,072 0,000 237,696 10,000 237,789 10,000 237,718 15,111 237,572 20,334 237,376 30,000 237,817 36,614 232,187 40,000 237,967 50,000 238,130 60,000 238,114 70,000 238,087 80,000 238,862 90,000 238,837 90,000 235,974 0,000 238,014 5,661 236,979 10,000 237,989 13,444 237,487 13,444 237,990 13,444 237,487 19,395 237,735 20,000 237,979 20,000 237,745 30,000 237,863 30,000 237,929 33,848 237,929 36,572 237,929	0,000 237,825 10,000 237,272 20,000 237,104 30,000 236,472 40,000 235,972 50,000 235,972 60,000 234,072 70,000 234,072 80,000 233,072 90,000 232,072 0,000 232,272 1,114 231,025 10,000 231,741 15,111 231,572 20,334 231,376 30,000 231,812 36,614 232,187 40,000 232,524 50,000 233,124 60,000 233,824 70,000 234,524 80,000 235,224 90,000 235,924 0,000 236,624 5,661 236,979 10,000 237,284 13,444 237,487 13,444 237,990 19,395 237,735 20,000 237,745 30,000 238,027 30,000 237,929 33,848 237,929 36,572 237,929	0,000 237,825 10,000 237,272 20,000 237,104 30,000 236,472 40,000 235,972 50,000 235,972 60,000 234,072 70,000 234,072 80,000 233,072 90,000 232,072 0,000 232,272 1,114 231,025 10,000 231,741 15,111 231,572 20,334 231,376 30,000 231,812 36,614 232,187 40,000 232,524 50,000 233,124 60,000 233,824 70,000 234,524 80,000 235,224 90,000 235,924 0,000 236,624 5,661 236,979 10,000 237,284 13,444 237,487 13,444 237,990 19,395 237,735 20,000 237,745 30,000 238,027 30,000 237,929 33,848 237,929 36,572 237,929
GELÄNDEHÖHE	0,000 237,825 10,000 237,272 20,000 237,104 30,000 236,472 40,000 235,972 50,000 235,972 60,000 234,072 70,000 234,072 80,000 233,072 90,000 232,072 0,000 232,272 1,114 231,025 10,000 231,741 15,111 231,572 20,334 231,376 30,000 231,812 36,614 232,187 40,000 232,524 50,000 233,124 60,000 233,824 70,000 234,524 80,000 235,224 90,000 235,924 0,000 238,014 5,661 236,979 10,000 237,989 13,444 237,487 13,444 237,990 19,395 237,735 20,000 237,979 20,000 237,745 30,000 237,863 30,000 237,929 33,848 237,929 36,572 237,929	0,000 237,825 10,000 237,272 20,000 237,104 30,000 236,472 40,000 235,972 50,000 235,972 60,000 234,072 70,000 234,072 80,000 233,072 90,000 232,072 0,000 232,272 1,114 231,025 10,000 231,741 15,111 231,572 20,334 231,376 30,000 231,812 36,614 232,187 40,000 232,524 50,000 233,124 60,000 233,824 70,000 234,524 80,000 235,224 90,000 235,924 0,000 236,624 5,661 236,979 10,000 237,284 13,444 237,487 13,444 237,990 19,395 237,735 20,000 237,745 30,000 238,027 30,000 237,929 33,848 237,929 36,572 237,929	0,000 237,825 10,000 237,272 20,000 237,104 30,000 236,472 40,000 235,972 50,000 235,972 60,000 234,072 70,000 234,072 80,000 233,072 90,000 232,072 0,000 232,272 1,114 231,025 10,000 231,741 15,111 231,572 20,334 231,376 30,000 231,812 36,614 232,187 40,000 232,524 50,000 233,124 60,000 233,824 70,000 234,524 80,000 235,224 90,000 235,924 0,000 236,624 5,661 236,979 10,000 237,284 13,444 237,487 13,444 237,990 19,395 237,735 20,000 237,745 30,000 238,027 30,000 237,929 33,848 237,929 36,572 237,929



Verkehrsprojekt
Deutsche Einheit Schiene Nr. 8

Ausbaustrecke Nürnberg – Ebersfeld
Abschnitt Bamberg

Planfeststellung Bau-km 56,165 – 62,373
und Bau-km 0,000 – 2,408

Anlage 6.8
zur Planungsänderung

ersetzt durch
Anlage 6.9 und 6.10

PBDE PZ Erfurt, 30.04.1996

A. Hübner

In 1 Blatt Blatt 1

Im Auftrag der Deutschen Bahn

Planungsgesellschaft Bahnbau
Deutsche Einheit mbH
Projektzentrum 813, Straße Nürnberg – Erfurt
Erfurt, den 02.05.1994

PB DE

Planungsgemeinschaft ABS

SEIB Ing.-Consult
90443 Nürnberg
Stromerstraße 5
Tel. 0911/20630-0

Emch + Berger GmbH
Ingenieure und Planer
90429 Nürnberg
Erbenerstraße 4
Tel. 0911/92631-0

Blatt Nr.:
Auftrag Nr.:
Datum:
Name:
bearb. 03.94 Hetzel
gez. 03.94 Eibl
gepr. 03.94 Hauner

Plan-Nummer:
Anlage Nr. 6.12
Ausgabe v.:
Ersatz f.:
Ursprung

Maßstab: 1:1000/
100/
1:50

Ausbaustrecke Nürnberg-Ebersfeld * PFA 22 Bamberg

Höhenplan
Regelquerschnitt

Umbau der Zufahrt zur Coburger Straße

Bahn-km 1.719

ARCHIVIER IN: D:\SK_BAMBERG\BAMBERG_PFA\106-TIEF_ARCHIV\COBURG_PFA_PFS.DWG